



- 🌸 Home
- 🌸 About Us
- 🌸 Contact Us
- 🌸 Weekly Newsletter
- 🌸 Calendar
- 🌸 Homework
- 🌸 Learning Links
- 🌸 Daily Schedule
- 🌸 Mrs. Bortman

Welcome to our class website!

We would like to officially welcome you to the year of the Zebra! Our class focus for the 2009-2010 school year will be centered around a theme...The World Around Us. Our classroom will examine various aspects of the world around us as well as how we can positively impact it.



Zap
Education
By
Raising
Achievement

In our class, we will work to build a community of learners that strive to give their personal best in everything they do. All students will be held in high esteem and we will seek to promote positive actions. To this end, our class is fortunate to have Mrs. Bortman as part of our team. She will be joining us to co-teach during our reading and math blocks.

We are looking forward to a great year, one in which we aim to create a dynamic learning experience that you and your child will always remember.

To contact us:

Enterprise Elementary School
7000 Enterprise Road
Cocoa, FL 32927

Phone: 321-633-3434
ext. 5302 or 5303

E-mail:
Luecking.Christine@brevardschools.org
Roth.Rose@brevardschools.org

**Together everyone
achieves more.**

Kagan



- Home
- About Us
- Contact Us
- Weekly Newsletter
- Calendar
- Homework
- Learning Links
- Daily Schedule
- Mrs. Bortman

About Us

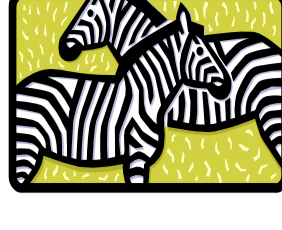
Mrs. Roth and Mrs. Luecking have been teaching together for the past 6 years. Although Mrs. Roth was a Resource Teacher, she and Mrs. Luecking worked together on a daily basis to promote academic success with all children.

Joining together as a team, Mrs. Roth and Mrs. Luecking are very excited about teaching together in 3rd Grade. They both bring many talents to the classroom and will combine these talents to help their students excel academically, personally, and socially.

On personal notes...

Mrs. Roth graduated from UCF in 2003 with her Bachelor's Degree in Exceptional Education and in 2006 with her Master's of Education. She resides in Rockledge with her husband. As the mother of two wonderful children and a grandmother, she enjoys spending time with her family. When relaxing you can find her in the garden, in the pool, playing the piano, cooking, or reading a good book!

Mrs. Luecking has been teaching for eighteen years. Seventeen of those years were in fourth grade. Mrs. Luecking is very excited to be moving to third grade this year. She is a National Board Certified Teacher and has just finished classes to add a reading certification to her teaching certificate. Mrs. Luecking is a mother of two daughters and has five grandchildren. She enjoys walking and watching movies. Her favorite thing to do in her free time is to curl up with a good book.



"We are not here to merely make a living. We are here to enrich the world."

Woodrow Wilson

Phone: 321-633-3434
ext. 5302 Or 5303
E-mail: Luecking.Christine@brevardschools.org
Roth.Rose@brevardschools.org

[Home](#) | [About Us](#) | [Contact Us](#) | [Weekly Newsletter](#) | [Calendar](#) | [Homework](#) | [Learning Links](#) | [Schedule](#)



- Home
- About Us
- Contact Us
- Weekly Newsletter
- Calendar
- Homework
- Learning Links
- Daily Schedule
- Mrs. Bortman

Contact Us

Feel free to stop in at the school to have visit, just don't forget to check in at the front office first!

If you would like to volunteer or assist the class in any way, please contact us.

Should you have any questions about your child or any school functions, please contact us.

We welcome calls, visits, and emails. Please use the manner that is convenient for you. We will respond to your communication as quickly as possible.



If speaking is silver, then listening is gold.

Turkish Proverb

To contact us:

Enterprise Elementary School
7000 Enterprise Road
Cocoa, FL 32927

Phone: 321-633-3434

ext. 5302 Or 5303

E-mail:

Luecking.Christine@brevardschools.org

Roth.Rose@brevardschools.org



- Home
- About Us
- Contact Us
- Weekly Newsletter
- Calendar
- Homework
- Learning Links
- Daily Schedule
- Mrs. Bortman

Weekly Newsletter

Roth.Rose@brevardschools.org

Luecking.Christine@brevardschools.org

[Home](#) | [About Us](#) | [Contact Us](#) | [Weekly Newsletter](#) | [Calendar](#) | [Homework](#) | [Learning Links](#) | [Schedule](#)



- Home
- About Us
- Contact Us
- Weekly Newsletter
- Calendar**
- Homework
- Learning Links
- Daily Schedule
- Mrs. Bortman

Calendar

August 2009						
Sun	Mon	Tue	Wed	Thu	Fri	Sat
						1
2	3	4	5	6	7	8
9	10	11	12	13	14	15
16	17	18	19	20	21	22
23	24	25	26	27	28	29
30	31					

- 8/10/09- Students' First day of 2009-2010 School Year.
- WELCOME to the YEAR OF THE ZEBRA!



- Home
- About Us
- Contact Us
- Weekly Newsletter
- Calendar
- Homework
- Learning Links
- Daily Schedule
- Mrs. Bortman

Homework

Students will copy homework in their planners on Monday and Wednesday.

Reading

Students are expected to read 15 minutes each night (5 nights). Students will record the title of the book, author, and minutes read in the reading section of their planner. Parents will total the minutes and sign. These reading minutes are due each Monday.



Reading fluency homework will be assigned on Monday and collected the following Monday.

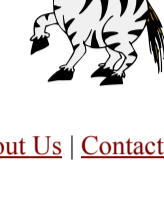


Spelling

A spelling list will come home on Monday. A spelling test which will include two dictation sentences will be given each Friday. In addition, students will receive spelling homework on Monday and Wednesday to help prepare for the test.

Math

Students will receive math homework on Monday and Wednesday.



Other Assignments

Projects will be assigned throughout the year. Please check the weekly newsletter for further information.

[Home](#) | [About Us](#) | [Contact Us](#) | [Weekly Newsletter](#) | [Calendar](#) | [Homework](#) | [Learning Links](#) | [Schedule](#)



Adventure is worthwhile.
-Amelia Earhart

Learning Links

May we suggest the following education websites that we have found help students in achieving their academic goals.

IXL Math is a great site to practice all of your 3rd grade math skills. Use this site as a guest and practice, practice, practice!

<http://www.ixl.com/math/>

Math Playground is the place to go to work on math word problems, logic puzzles, and to practice your multiplication facts!

<http://mathplayground.com/index.html>

Treasures is the website of our county adopted reading program. This site has great activities that support weekly selections and spelling lists!

<http://treasures.macmillanmh.com/national/students>

Ticket To Read is a wonderful place to read. You get tickets after answering questions about what you read. Use these tickets to decorate your very own tree house! User Id and passwords are supplied by your teachers.

<http://www.tickettoread.com/>

FunBrain offers loads of games for math and reading.

<http://www.funbrain.com>

- Home
- About Us
- Contact Us
- Weekly Newsletter
- Calendar
- Homework
- Learning Links
- Daily Schedule
- Mrs. Bortman



- 🏠 Home
- 📄 About Us
- 📞 Contact Us
- 📧 Weekly Newsletter
- 📅 Calendar
- 📎 Homework
- 🔗 Learning Links
- 📅 Daily Schedule
- 👤 Mrs. Bortman

Daily Schedule



7:45- 8:15 (Arrival by 8:00)

Unpack, turn in homework directly followed by announcements. Morning planner attended to while Math problem of day is completed.



8:15- 9:45 Reading Block

90 Minute reading block to include whole group work, guided reading groups, and independent center activities.



9:45-10:15 III/ Enrichment with Social Studies/Science

30 minute block created to give additional reading support to all students either by remediation or enrichment (according to individual student need).



10:16-10:56 Activity

Activities included each week include P.E., Art, Music, and Wellness.



11:00-12:05 Math

Math instruction will include practice on concepts taught utilizing interactive activities.



12:05-12:20 Recess

Recess will take place outside if weather permits. In case of inclement weather, recess will be in guided in classroom.



12:25 - 12:55 Lunch Mrs. Roth's Class

12:28 -12:58 Lunch Mrs. Luecking's Class



1:00- 1:30 Writing

Students will learn the skills necessary for proper written expression.



1:30-2:10 Science/ Social Studies

Students will learn grade level science and social studies content.

2:10-2:15 Clean-up & brain games

Dismissal begins @ 2:15



- 🌟 Home
- 🌟 About Us
- 🌟 Contact Us
- 🌟 Weekly Newsletter
- 🌟 Calendar
- 🌟 Homework
- 🌟 Learning Links
- 🌟 Daily Schedule
- 🌟 Mrs. Bortman

Please follow the link below to learn about this wonderful teacher we are fortunate to have as a part of our team.

[Home](#) | [About Us](#) | [Contact Us](#) | [Weekly Newsletter](#) | [Calendar](#) | [Homework](#) | [Learning Links](#) | [Schedule](#)